

1

186' PAR 3
WC Griffith Memorial
Disc Golf Course - Faircrest Park
The Green Flag



DO NOT EVER THROW
IF THERE ARE OTHER
PLAYERS OR PARK USERS
WITHIN YOUR RANGE !!!

DO NOT EVER THROW IF THERE
ARE OTHER PLAYERS OR PARK
USERS WITHIN YOUR RANGE !!!
YELL 'FORE' ... LOUD ... IF YOUR
SHOT **MIGHT** HIT SOMEONE !!!
WE ARE ALL GUESTS IN THIS PARK.
DON'T SPOIL IT FOR OTHERS!
LET FASTER PLAYERS PLAY THRU!

2018 CANTON TOWNSHIP
ELECTED OFFICIALS

TRUSTEES
WILLIAM G. MITTAS
MARK B. SHAFFER
CHRISTOPHER B. NICHOLS

FISCAL OFFICER:
RONALD L. SMITH



2

183' PAR 3
WC Griffith Memorial
Disc Golf Course - Faircrest Park
A Tangled Web

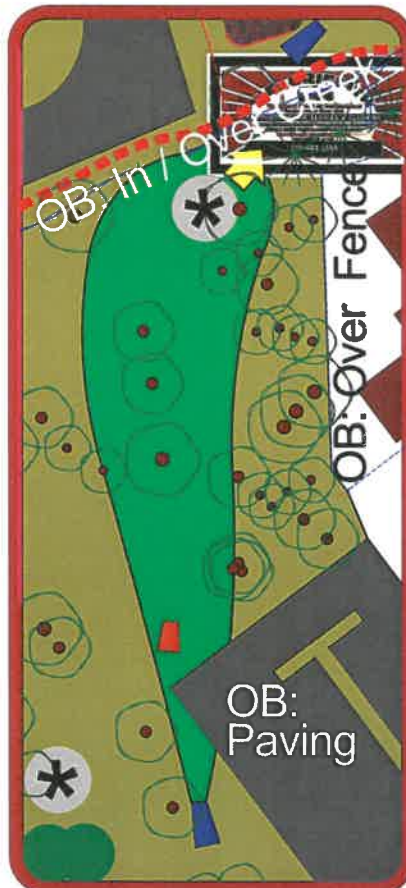


**DO NOT EVER THROW
IF THERE ARE OTHER
PLAYERS OR PARK USERS
WITHIN YOUR RANGE !!!**

803.02 Teeing Off
...When the disc is released, at least one of the players supporting points must be in contact with the teeing area (behind footboard) and all the players supporting points must be on the pad at the time of release.



484-2518



3

240' PAR 3
WC Griffith Memorial
Disc Golf Course - Faircrest Park
Will's Creek Run



**DO NOT EVER THROW
IF THERE ARE OTHER
PLAYERS OR PARK USERS
WITHIN YOUR RANGE !!!**

803.05 Obstacles & Relief:
A Player may not move, alter,
bend, break, or hold back any
part of an obstacle between
the lie and the hole... A Player
who purposefully damages the
course shall receive 2 penalty
throws... The Player may also
be disqualified from the
tournament!

Scott & Edie
HAMILTON
FOUNDATION



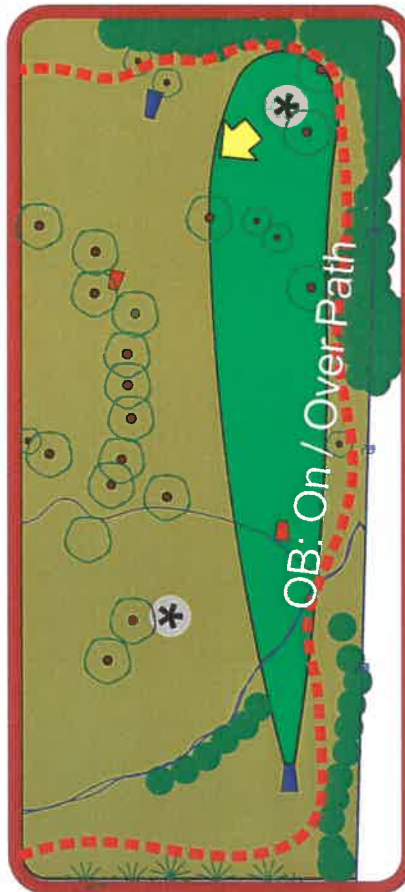
4

285' PAR 3
WC Griffith Memorial
Disc Golf Course - Faircrest Park
Back Straight-Away



**DO NOT EVER THROW
IF THERE ARE OTHER
PLAYERS OR PARK USERS
WITHIN YOUR RANGE !!!**

801.01.G: Courtesy
A player violating a courtesy rule may be *warned* by the affected player, even from another group with all of the players of the group advised of the *warning*. The player shall be assessed one penalty throw for each *subsequent* courtesy violation...



5

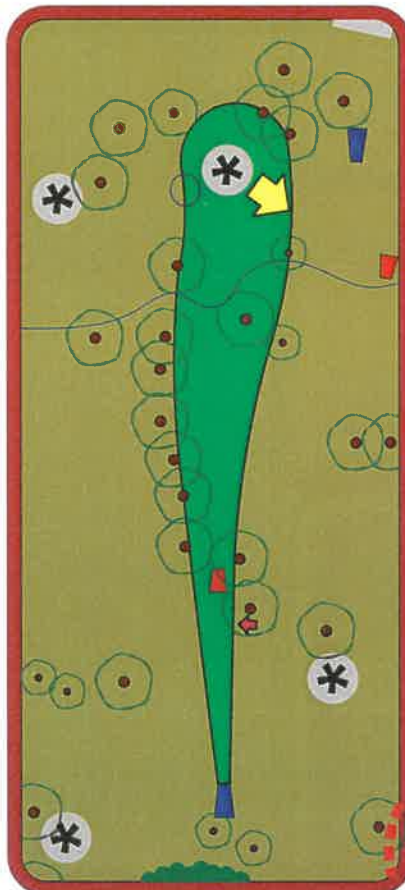
219' PAR 3
WC Griffith Memorial
Disc Golf Course - Faircrest Park
The American Dream



**DO NOT EVER THROW
IF THERE ARE OTHER
PLAYERS OR PARK USERS
WITHIN YOUR RANGE !!!**

803.03: Marking the Lie
... After each throw... the player
shall place a mini marker disc
touching the front edge of the disc
between the disc and the target...
or without touching or repositioning
the disc, use the thrown disc as a
marker.

Smith's
WACO MARKET
Home of Wild Bill's
Pizza & Chicken
1660 Waynesburg Dr. SE, Canton



6

252' PAR 3
WC Griffith Memorial
Disc Golf Course - Faircrest Park
Brothers Drive



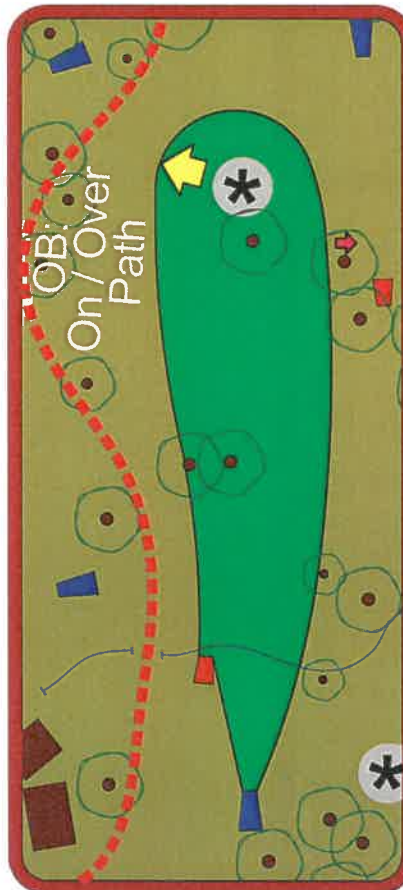
DO NOT EVER THROW
IF THERE ARE OTHER
PLAYERS OR PARK USERS
WITHIN YOUR RANGE !!!

803.13: Holing Out - Part A
... A player who fails to play any
hole or hole out *may* be
disqualified... *Inadvertantly* failing to
hole out shall result in two penalty
throws... *Intentionally* failing to hole
out constitutes withdrawal from the
tournament...



Milhoan Asphalt Inc.
Paving, Sealcoating, Stripping
and Asphalt Repairs

PO Box 293 East Sparta, OH 44626
Phone (330) 902-0233
milhoanasphalt@hotmail.com



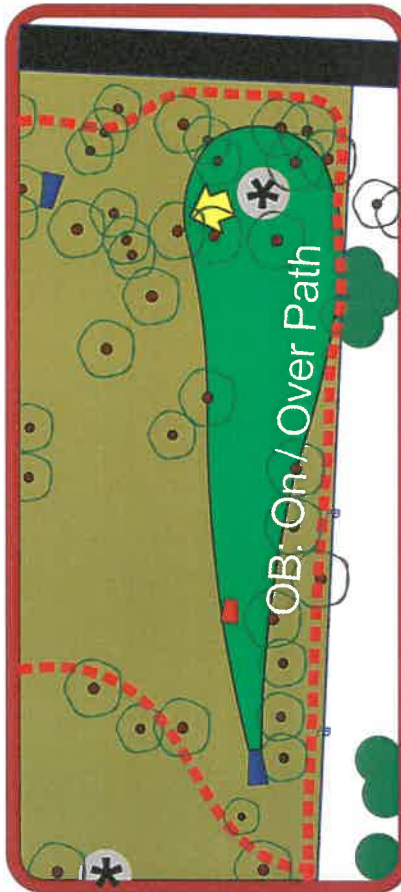
7

300' PAR 3
WC Griffith Memorial
Disc Golf Course - Faircrest Park
Willa's Walk



**DO NOT EVER THROW
IF THERE ARE OTHER
PLAYERS OR PARK USERS
WITHIN YOUR RANGE !!!**

803.13 Holing Out - Part B
... To hole out, the thrower must release the disc and it must come to rest supported by the chains or inner tray (inside of the tray). A disc that entered the target from the top of the chain support or thru the side (or rests on top) is not considered holed out.



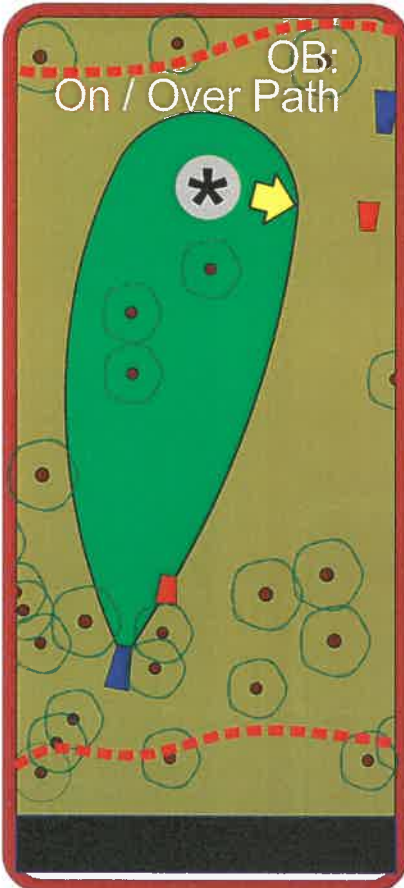
8

228' PAR 3
WC Griffith Memorial
Disc Golf Course - Faircrest Park
The Sprint



**DO NOT EVER THROW
IF THERE ARE OTHER
PLAYERS OR PARK USERS
WITHIN YOUR RANGE !!!**

803.03.3: Failure To Hole Out. The player has teed off on a hole without having holed out on the previous hole. The score for the misplayed hole shall be the number of throws made, plus one for holing out, plus two penalty throws for the misplay...



Oldest Name in the Septic Business
Grandsons of W.C. Griffith

D.Griffith & Sons Inc.

Oil & Gas	Septic/Sewer Systems	Design Plans
Land Clearing	Installation & Repairs	Septic Inspections
Hauling/Excavation	Basement Excavation	Driveway Installation

330-488-2832

Dennis, Michael, and Daniel Griffith
BBB Member - Licensed & Insured

9

264' PAR 3
WC Griffith Memorial
Disc Golf Course - Faircrest Park
The Final Lap



**DO NOT EVER THROW
IF THERE ARE OTHER
PLAYERS OR PARK USERS
WITHIN YOUR RANGE !!!**

802.01: Discs Used to Play
Discs must meet PDGA standards...
A disc that is cracked or perforated is
illegal... Players may not make post
production modifications... Carrying
an illegal disc is a two stroke
penalty... repeatedly throwing an
illegal disc is subject to
disqualification.



Sponsored by the
**W.C. Griffith
Sons & Family**

